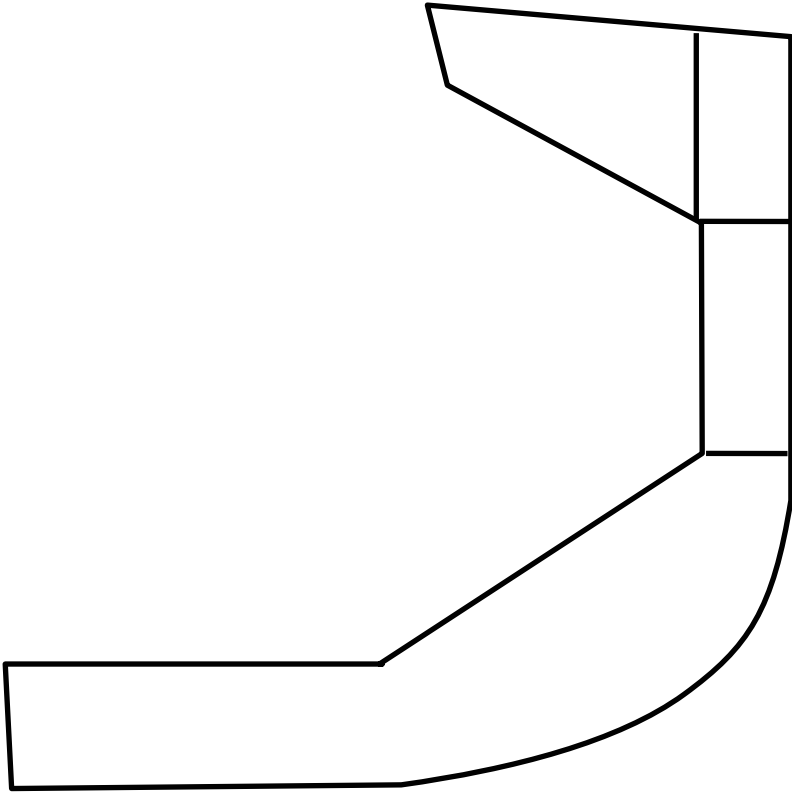
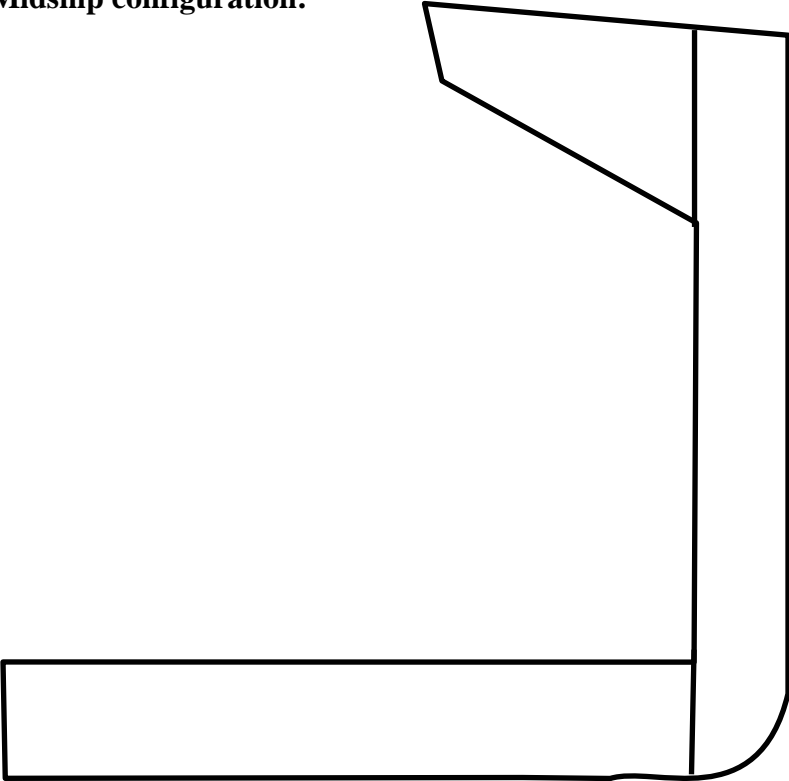


**End hold configuration. Sloped "hopper" due to shape in bilge:**



**Midship configuration:**



Filename: Document in Windows Internet Explorer  
Directory: C:\Documents and Settings\IACSTUser\My Documents  
Template: C:\Documents and Settings\IACSTUser\Application  
Data\Microsoft\Templates\Normal.dot  
Title: End hold configuration  
Subject:  
Author: Hans Olav Strømme  
Keywords:  
Comments:  
Creation Date: 22/10/2007 10:56 AM  
Change Number: 3  
Last Saved On: 22/10/2007 10:56 AM  
Last Saved By: 9705  
Total Editing Time: 1 Minute  
Last Printed On: 25/10/2007 10:14 AM  
As of Last Complete Printing  
Number of Pages: 1  
Number of Words: 22 (approx.)  
Number of Characters: 128 (approx.)