

### 1.3 Protection of cargo hold spaces

#### 1.3.1 Coating

It is the responsibility of the shipbuilder and of the owner to choose coatings suitable for the intended cargoes, in particular for the compatibility with the cargo.

#### 1.3.2 Application

All internal and external surfaces of hatch coamings and hatch covers, and all internal surfaces of cargo holds (side and transverse bulkheads), excluding the inner bottom area and part of the hopper tank sloping plate and lower stool sloping plate, are to have an efficient protective coating, of an epoxy type or equivalent, applied in accordance with the manufacturer's recommendation.

The side and transverse bulkhead areas to be coated are specified in [1.3.3] and [1.3.4] respectively.

#### 1.3.3 Side areas to be coated

The areas to be coated are the internal surfaces

- the inner side plating
- the internal surfaces of the topside tank sloping plates
- the internal surfaces of the hopper tank sloping plates for a distance of 300 mm below the frame end bracket for single side bulk carriers or below the hopper tank upper end for double side bulk carriers.

These areas are shown in Fig. 1.

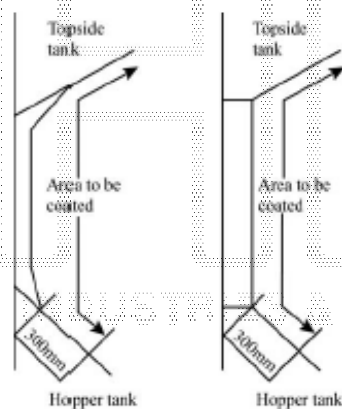


Figure 1: Side areas to be coated

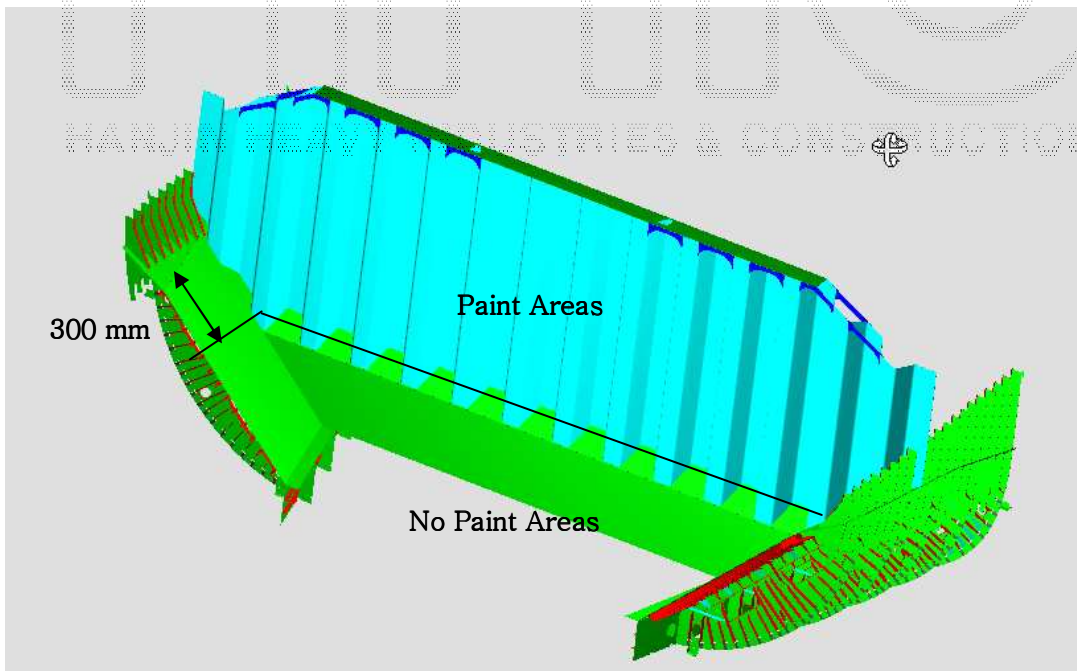
#### 1.3.4 Transverse bulkhead areas to be coated

The areas of transverse bulkheads to be coated are all the areas located above an horizontal level located at a distance of 300 mm below the frame end bracket for single side bulk carriers or below the hopper tank upper end for double side bulk carriers.

### [Our design concept]

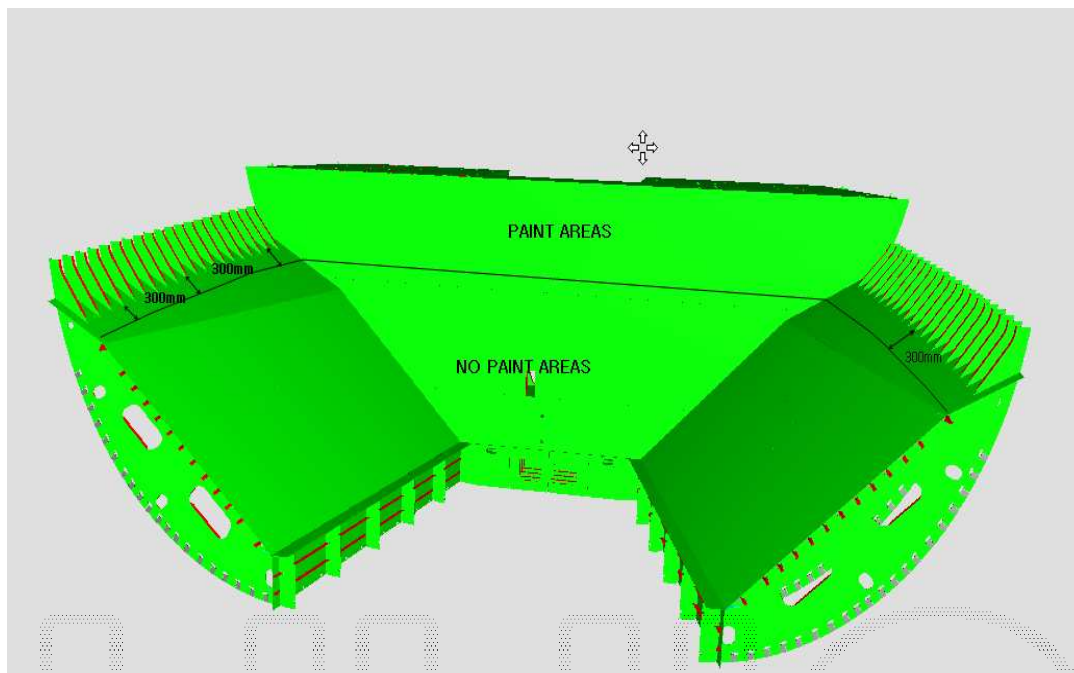
- 1) In case of side areas, the areas to be coated are “the inner side plating, the internal surfaces for the topside tank sloping plates” to “the hopper tank sloping plates for a distance of 300mm below the frame end bracket” according to 1.3.3. (Please refer to detail samples as follows)
- 2) In case of transverse bulkhead areas, the areas to be coated are above an horizontal level located at a distance of 300mm below the frame end bracket for single side bulk carrier according to 1.3.4. (Please refer to detail samples as follows)

Sample1)



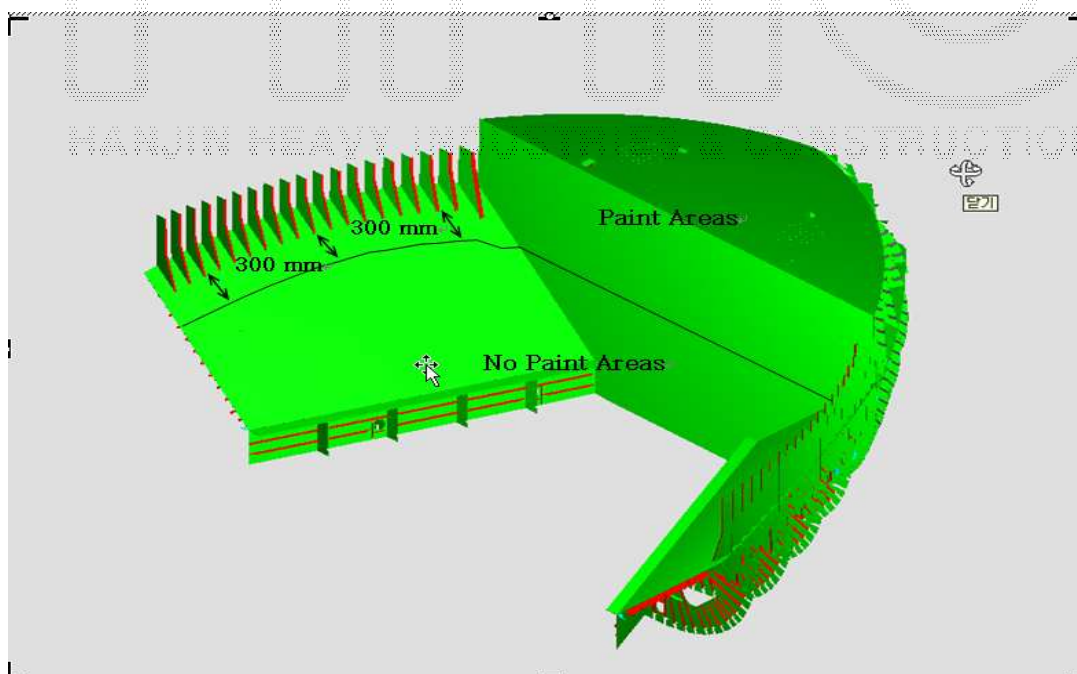
[No.9 C/H Front side]

Sample2)



[No.9 C/H After side]

Sample3)



[No.1 C/H Front side]