

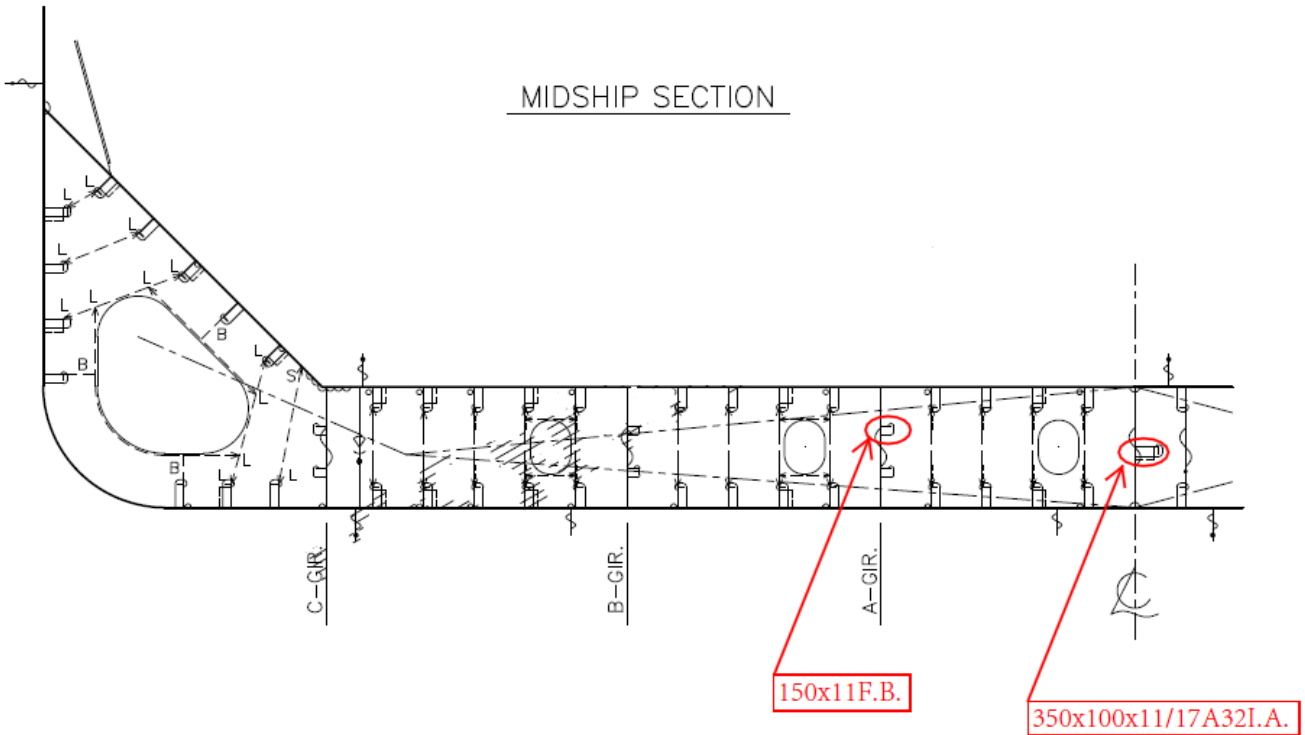
Dear sir,
Good day!

For a CSR applied bulk carrier, the continuous horizontal stiffener provided at non-watertight A, B & C - Girders is 150x11F.B.
Continuous horizontal stiffener provided at watertight C.L. - Girders is 350x100x11/17I.A.(HT32).

Questions:

1. Stiffeners on A,B&C - Girder are considered as longitudinal stiffeners or web stiffeners?
2. Stiffener on C.L. - Girder are considered as longitudinal stiffener or web stiffener?

So far, three classifications gave three different answer to Question 1.
I hope final explain from IACS.



Kind regards,
Shen Yaming
2012-04-23

Ship Planning Sec., Research & Development Dept.
Technical Division

Nantong COSCO KHI Ship Engineering Co., Ltd.
Tel: +86 (0)513 8516 8338 Fax: +86 (0)513 8350 8399
Address: 117 Linjiang Road, Nantong, Jiangsu, China
P.C.: 226005
